

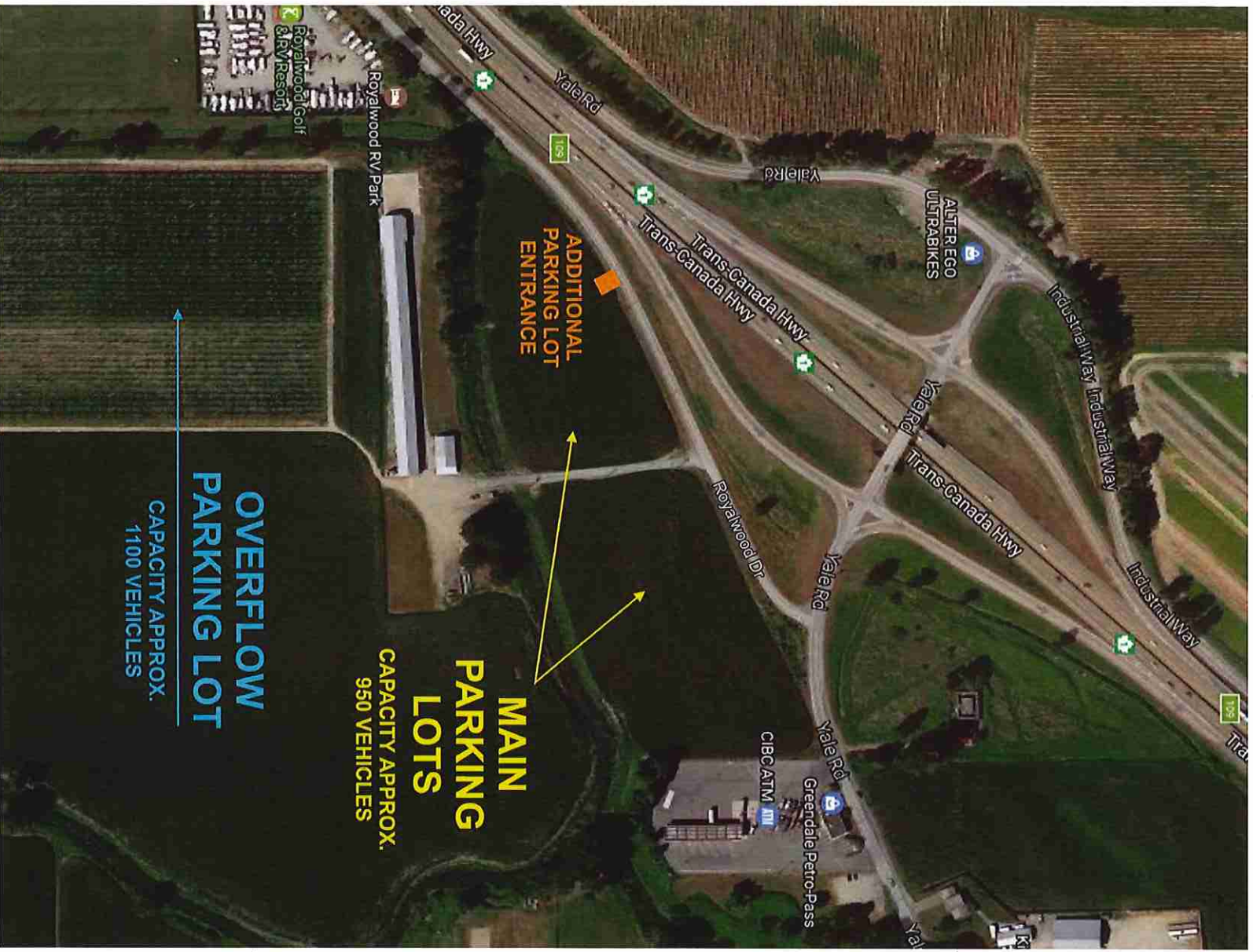


Data accuracy not guaranteed. For more information related to planning, please contact the City of Chilliwack at 604-792-9311.
Aerial photo (June 2016)

Legend

-  City boundary
-  Aerial photo (June 2016)



Overview map showing event and parking proximity to Highway #1



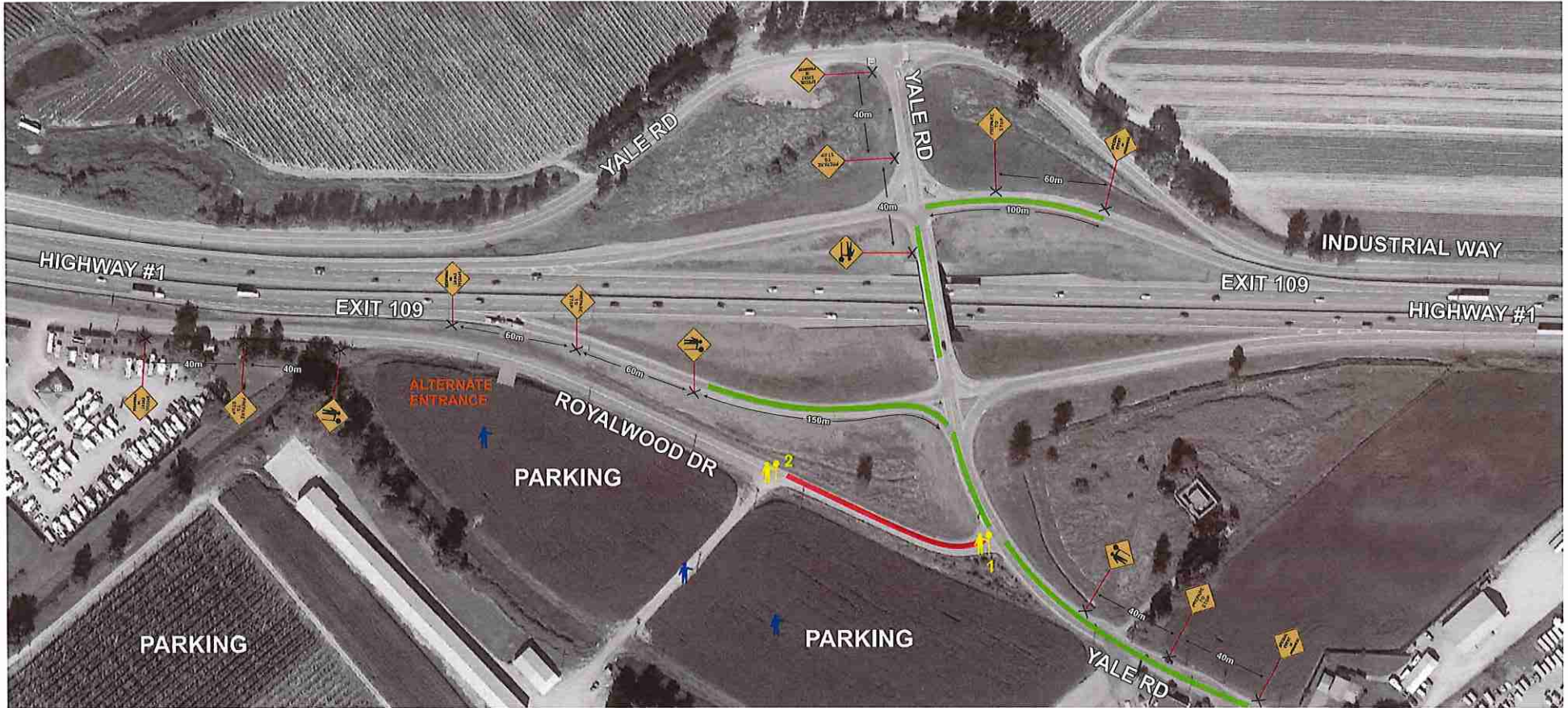
Contractor Name:	TCP #	Date:
Tulips of the Valley	TCP 1 of 6	April 18th to May 7th
Job Description:		
Traffic Control and Parking Management		
Contractor Contact:	Phone:	Email:
Kate Onos-Gilbert	604-997-0153	kate@tulipsofthevalley.com
Traffic Supervisor Contact:	Phone:	Email:
Angella Fox	604-858-7730	Angella@StreetwiseTraffic.ca
Traffic Plan Contact:	Phone:	Email:
Tehjay Fox	604-799-6750	Tehjay@StreetwiseTraffic.ca

DRAWING SPECIFIC NOTES

- Dynamic Message Sign to be placed 2km West of Yale Rd on Highway #1
- Sign Is to Read - CHWK Tulip Festival - Expect Congestion - Alternate Exit 116

GENERAL NOTES

- All traffic control shall conform to the TCM and the latest catalogue for Standard Traffic Signs
- Signs shown are representations of signs only and the MOTI Construction Sign Catalogue should be used for detailed sign design
- Dimensions shown are in meters and are the minimums except as otherwise indicated
- All permanent signage that will conflict with this site will be covered or removed while the works are in effect
- Active Work Zones and Hazards shall be delineated to protect workers and the travelling public
- Maximum distance between cones/delineator/barrel should be 10m
- Tubular markers and signs will be double based and well secured during windy conditions
- Distances may be adjusted due to urban block length
- These pages are best printed on a Tabloid (11x17) page size



Contractor Name:	TCP #	Date:
Tulips of the Valley	TCP 2 of 6	April 18th to May 7th
Job Description: Traffic Control and Parking Management		
Contractor Contact:	Phone:	Email:
Kate Onos-Gilbert	604-997-0153	kate@tulipsofthevalley.com
Traffic Supervisor Contact:	Phone:	Email:
Angelia Fox	604-858-7730	Angelia@StreetwiseTraffic.ca
Traffic Plan Contact:	Phone:	Email:
Tehjay Fox	604-799-6750	Tehjay@StreetwiseTraffic.ca

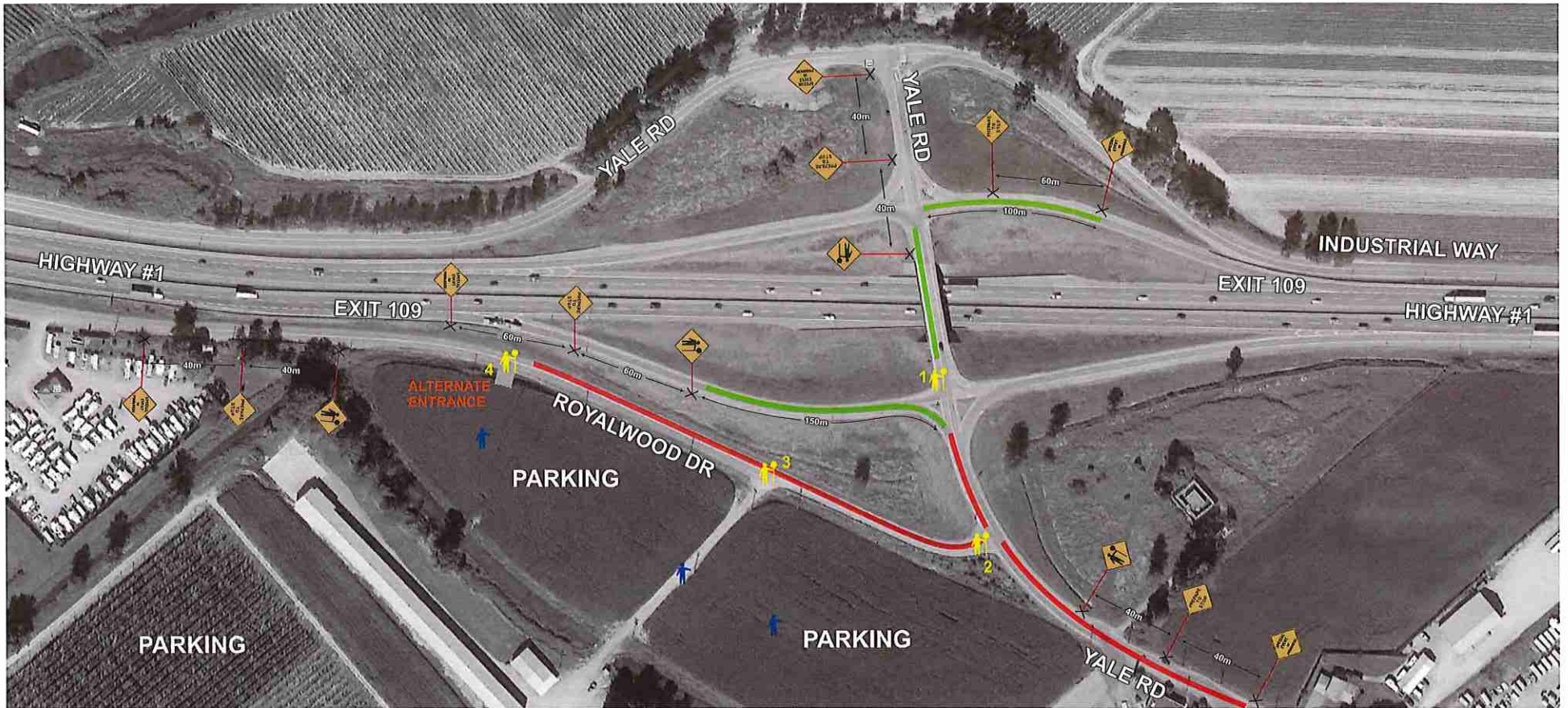
LEGEND	
	TRAFFIC CONTROL PERSONNEL
	SIGN STAND (TRIPOD)
	SIGN STAND (WINDMASTER)
	SIGN FLAGS
	CLASS 1 BARRICADE
	WORKZONE
	TRAFFIC BARREL
	TUBULAR MARKER - TYPE D
	TRAFFIC CONTROL VEHICLE
	FLASHING ARROW BOARD (FAB)
	EXISTING BUS STOP CLOSED
	RELOCATED BUS STOP

DRAWING SPECIFIC NOTES

- TCP 1 will monitor traffic volume on Yale Road
- If Royalwood Dr traffic backs up to Yale Rd, Traffic Plan 2 will be implemented immediately
- TCP 1 will assist motorists wishing to turn onto and off Royalwood Dr
- TCP 2 will control the flow of traffic to and from the parking lots.

GENERAL NOTES

- All traffic control shall conform to the TCM and the latest catalogue for Standard Traffic Signs
- Signs shown are representations of signs only and the MOTI Construction Sign Catalogue should be used for detailed sign design
- Dimensions shown are in meters and are the minimums except as otherwise indicated
- All permanent signage that will conflict with this site will be covered or removed while the works are in effect
- Active Work Zones and Hazards shall be delineated to protect workers and the travelling public
- Maximum distance between cone/delineator/barrel should be 10m
- Tubular markers and signs will be double based and well secured during windy conditions
- Distances may be adjusted due to urban block length
- These pages are best printed on a Tabloid (11x17) page size



Contractor Name:	TCP #	Date:
Tulips of the Valley	TCP 3 of 6	April 18th to May 7th
Job Description:		
Traffic Control and Parking Management		
Contractor Contact:	Phone:	Email:
Kate Onos-Gilbert	604-997-0153	kate@tulipsofthevalley.com
Traffic Supervisor Contact:	Phone:	Email:
Angella Fox	604-858-7730	Angella@StreetwiseTraffic.ca
Traffic Plan Contact:	Phone:	Email:
Tehjay Fox	604-799-6750	Tehjay@StreetwiseTraffic.ca

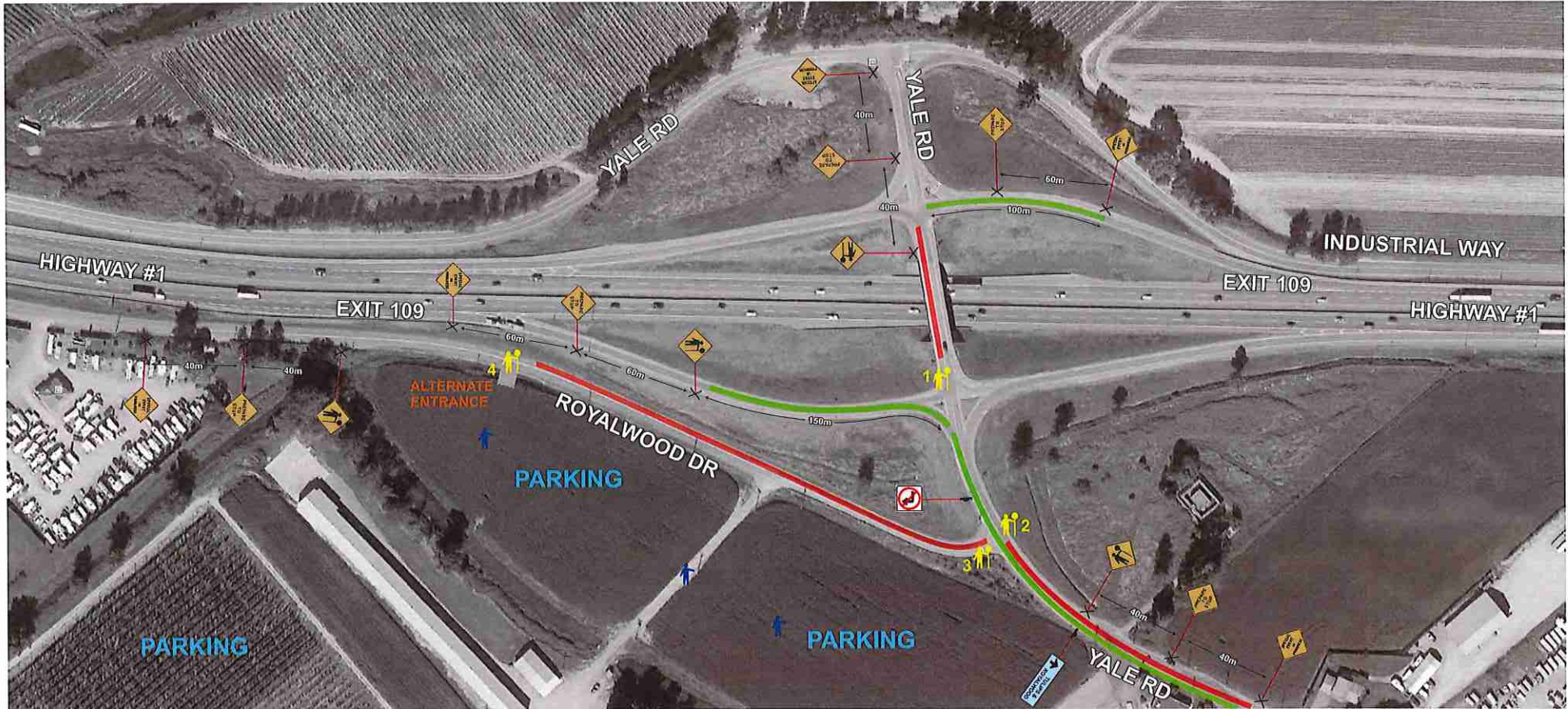
LEGEND	
	TRAFFIC CONTROL PERSONNEL
	SIGN STAND (TRIPOD)
	SIGN STAND (WINDMASTER)
	SIGN FLAGS
	CLASS 1 BARRICADE
	WORKZONE
	TRAFFIC BARREL
	TUBULAR MARKER - TYPE D
	TRAFFIC CONTROL VEHICLE
	FLASHING ARROW BOARD (FAB)
	EXISTING BUS STOP CLOSED
	RELOCATED BUS STOP

DRAWING SPECIFIC NOTES

- TCP 1 will monitor traffic volumes on each of the exits.
- If traffic backs up onto an exit, Traffic Plan 3 will be implemented immediately
- TCP 2 will assist motorists wishing to turn onto and off Royalwood Dr.
- TCP's 3 and 4 will control the flow of traffic to and from the parking lots.

GENERAL NOTES

- All traffic control shall conform to the TCM and the latest catalogue for Standard Traffic Signs
- Signs shown are representations of signs only and the MOTI Construction Sign Catalogue should be used for detailed sign design
- Dimensions shown are in meters and are the minimums except as otherwise indicated
- All permanent signage that will conflict with this site will be covered or removed while the works are in effect
- Active Work Zones and Hazards shall be delineated to protect workers and the travelling public
- Maximum distance between cones/delineator/barrel should be 10m
- Tubular markers and signs will be double based and well secured during windy conditions
- Distances may be adjusted due to urban block length
- These pages are best printed on a Tabloid (11x17) page size



Contractor Name:	TCP #	Date:
Tulips of the Valley	TCP 4 of 6	April 18th to May 7th
Job Description:	Traffic Control and Parking Management	
Contractor Contact:	Phone:	Email:
Kate Onos-Gilbert	604-997-0153	kate@tulipsofthevalley.com
Traffic Supervisor Contact:	Phone:	Email:
Angelia Fox	604-858-7730	Angelia@StreetwiseTraffic.ca
Traffic Plan Contact:	Phone:	Email:
Tehjay Fox	604-799-6750	Tehjay@StreetwiseTraffic.ca

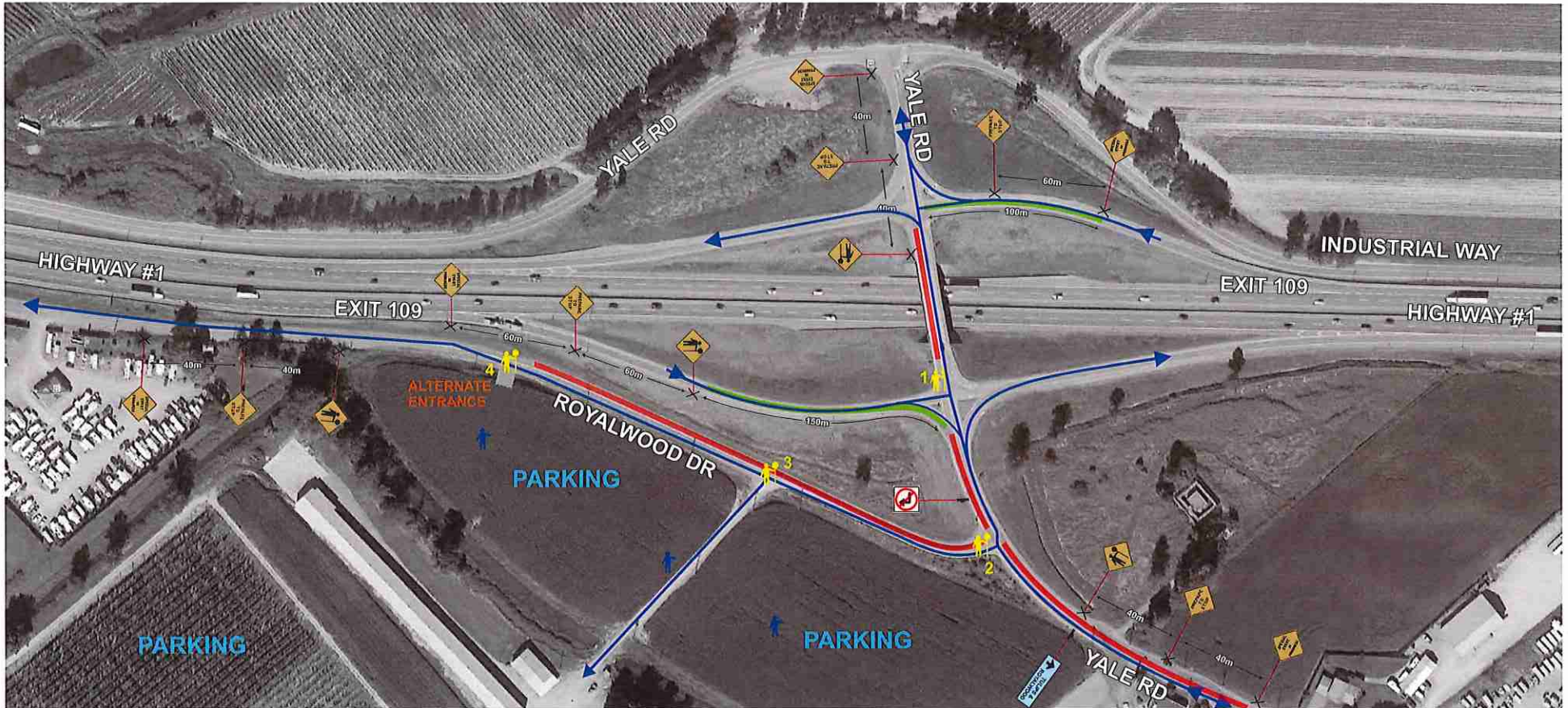
LEGEND	
	TRAFFIC CONTROL PERSONNEL
	SIGN STAND (TRIPOD)
	SIGN STAND (WINDMASTER)
	SIGN FLAGS
	CLASS 1 BARRICADE
	WORKZONE
	TRAFFIC BARREL
	TUBULAR MARKER - TYPE D
	TRAFFIC CONTROL VEHICLE
	FLASHING ARROW BOARD (FAB)
	EXISTING BUS STOP CLOSED
	RELOCATED BUS STOP

DRAWING SPECIFIC NOTES

- TCP 1 will monitor both exits and release traffic on a priority basis
- TCP 2 will hold traffic wishing traffic wishing to turn left onto Royalwood Drive.
- TCP 3 will hold traffic wishing to exit Royalwood Dr
- TCP 3 will restrict right turn movements to keep traffic flowing towards the Traffic Overflow Detour Route
- All TCP's will watch for local traffic displaying "Royalwood Passes" to allow priority access to Royalwood Dr.

GENERAL NOTES

- All traffic control shall conform to the TCM and the latest catalogue for Standard Traffic Signs
- Signs shown are representations of signs only and the MOTI Construction Sign Catalogue should be used for detailed sign design
- Dimensions shown are in meters and are the minimums except as otherwise indicated
- All permanent signage that will conflict with this site will be covered or removed while the works are in effect
- Active Work Zones and Hazards shall be delineated to protect workers and the travelling public
- Maximum distance between cones/delineator/barrel should be 10m
- Tubular markers and signs will be double based and well secured during windy conditions
- Distances may be adjusted due to urban block length
- These pages are best printed on a Tabloid (11x17) page size

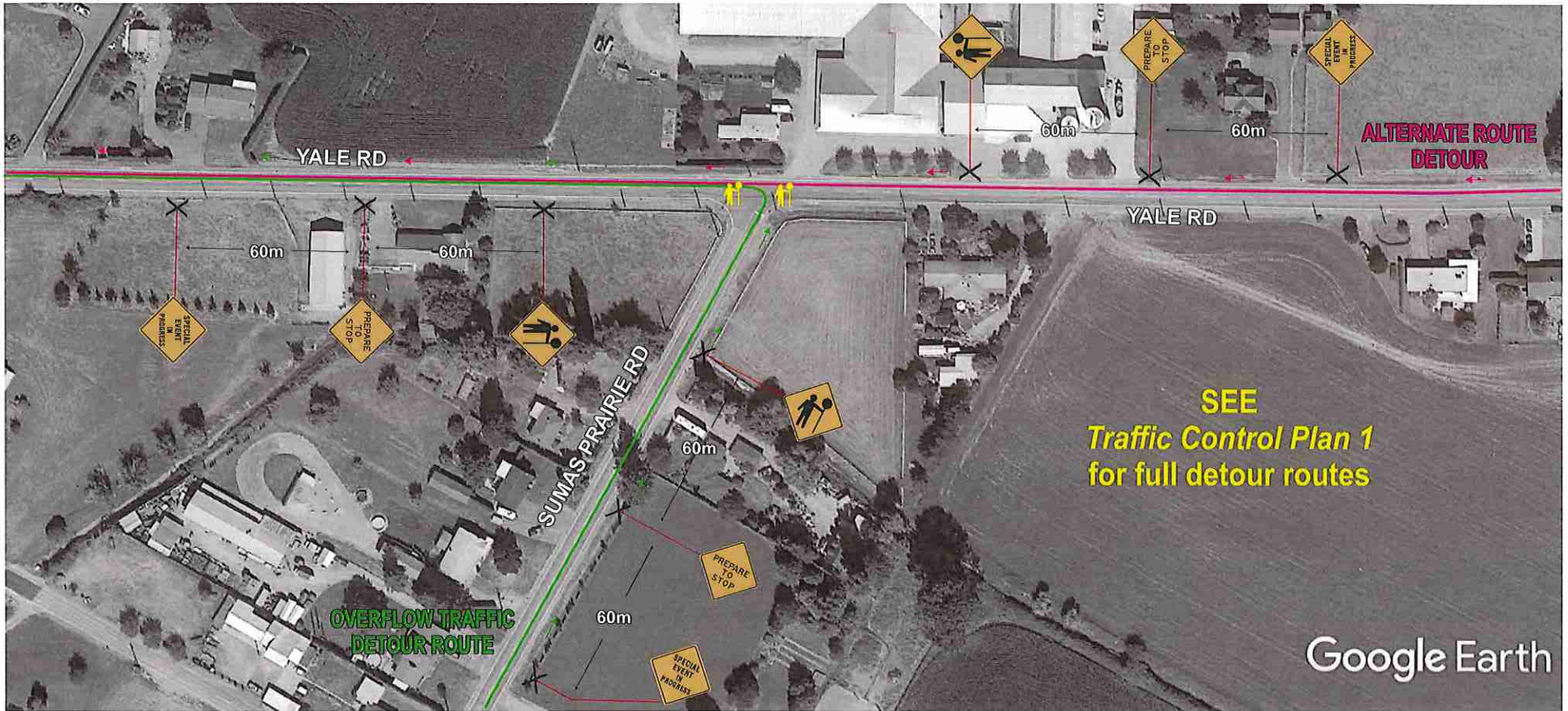


Contractor Name: Tulips of the Valley		TCP #: TCP 5 of 6		Date: April 18th to May 7th	
Job Description: Traffic Control and Parking Management					
Contractor Contact: Kate Onos-Gilbert		Phone: 604-997-0153		Email: kate@tulipsofthevalley.com	
Traffic Supervisor Contact: Angelia Fox		Phone: 604-858-7730		Email: Angelia@StreetwiseTraffic.ca	
Traffic Plan Contact: Tehjay Fox		Phone: 604-799-6750		Email: Tehjay@StreetwiseTraffic.ca	

LEGEND	
	TRAFFIC CONTROL PERSONNEL
	SIGN STAND (TRIPOD)
	SIGN STAND (WINDMASTER)
	SIGN FLAGS
	CLASS 1 BARRICADE
	WORKZONE
	TRAFFIC BARREL
	TUBULAR MARKER - TYPE D
	TRAFFIC CONTROL VEHICLE
	FLASHING ARROW BOARD (FAB)
	EXISTING BUS STOP CLOSED
	RELOCATED BUS STOP

DRAWING SPECIFIC NOTES
 • In the Event of an Emergency (once direction of emergency vehicle travel has been established) TCP's will ensure Emergency lanes are kept clear - all other lanes will be held.

GENERAL NOTES
 • All traffic control shall conform to the TCM and the latest catalogue for Standard Traffic Signs
 • Signs shown are representations of signs only and the MOTI Construction Sign Catalogue should be used for detailed sign design
 • Dimensions shown are in meters and are the minimums except as otherwise indicated
 • All permanent signage that will conflict with this site will be covered or removed while the works are in effect
 • Active Work Zones and Hazards shall be delineated to protect workers and the travelling public
 • Maximum distance between cone/delineator/barrel should be 10m
 • Tubular markers and signs will be double based and well secured during windy conditions
 • Distances may be adjusted due to urban block length
 • These pages are best printed on a Tabloid (11x17) page size



Contractor Name:	TCP #	Date:
Tulips of the Valley	TCP 6 of 6	April 18th to May 7th
Job Description: Traffic Control and Parking Management		
Contractor Contact:	Phone:	Email:
Kate Onos-Gilbert	604-997-0153	kate@tulipsofthevalley.com
Traffic Supervisor Contact:	Phone:	Email:
Angelia Fox	604-858-7730	Angelia@StreetwiseTraffic.ca
Traffic Plan Contact:	Phone:	Email:
Tehjay Fox	604-799-6750	Tehjay@StreetwiseTraffic.ca

TRAFFIC CONTROL PLAN
DATE OF LAST REVISION
2017-04-06

LEGEND

- | | |
|---------------------------|----------------------------|
| TRAFFIC CONTROL PERSONNEL | TRAFFIC BARREL |
| SIGN STAND (TRIPOD) | TUBULAR MARKER - TYPE D |
| SIGN STAND (WINDMASTER) | TRAFFIC CONTROL VEHICLE |
| SIGN FLAGS | FLASHING ARROW BOARD (FAB) |
| CLASS 1 BARRICADE | EXISTING BUS STOP CLOSED |
| WORKZONE | RELOCATED BUS STOP |

DRAWING SPECIFIC NOTES

• TCP's will control traffic as needed to assist motorists wishing to turn onto Yale Rd off Sumas Prairie Rd.

Please Note: This traffic plan only shows the portion of the detour that requires traffic control. Please see *Traffic Control Plan 1 - Overview Map* for full detour route details.

GENERAL NOTES

- All traffic control shall conform to the TCM and the latest catalogue for Standard Traffic Signs
- Signs shown are representations of signs only and the MOTI Construction Sign Catalogue should be used for detailed sign design
- Dimensions shown are in meters and are the minimums except as otherwise indicated
- All permanent signage that will conflict with this site will be covered or removed while the works are in effect
- Active Work Zones and Hazards shall be delineated to protect workers and the travelling public
- Maximum distance between cone/delineator/barrel should be 10m
- Tubular markers and signs will be double based and well secured during windy conditions
- Distances may be adjusted due to urban block length
- These pages are best printed on a Tabloid (11x17) page size